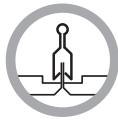
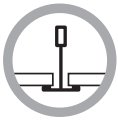


Fixing Bracket Options

Products in the Clearvision Recessed and Direct/indirect range are available in versions designed for installation into most common ceiling types. The majority will simply lift and tilt into an exposed T ceiling grid and as such all products in these ranges are supplied without suspension arm brackets (unless otherwise stated) as standard.



Technical Icons* present on each products page signify if versions are available for the 3 main ceiling types of; exposed T-grid, concealed grid metal tile and plasterboard. The choice of ceiling type will, in the majority of cases, dictate the product version/size supplied.

Therefore, **we recommend that the ceiling type should be specified on any order placed for this type of luminaire.** Please refer to individual product pages for ceiling option codes.

Ceiling Grid	O/A Bezel Size
T-Grid/Plasterboard	596 x 596mm
Metal Tile	599 x 599mm
Regular	585 x 585mm

Where an offer up solution, say into a metal tile or plasterboard ceiling is required, we are able to offer from 3 types of suspension arm kit. Each kit comprises a set of four arms as follows:

-FB1

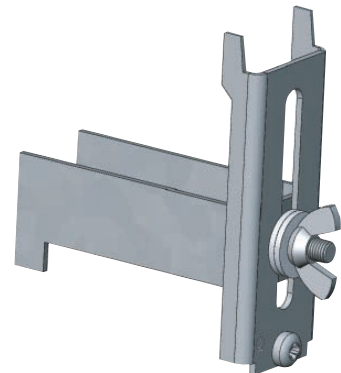
This is our standard offering and is the most cost effective.

The plate on each arm is simply offered into a slot on the side of the luminaire housing, the screw is then tightened using a screw/drilldriver, eventually gripping the luminaire side between screw-head and plate. Quick adjustments can be made by loosening and retightening of the screws.



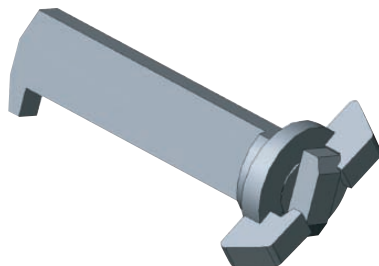
-FB3

This failsafe bracket design is recommended for use with larger/heavier luminaires (such as 1200 x 600mm formats), where the ceiling height is over 3 metres, or where vibration or other installation issues are a concern.



-FB2

Manufactured and known within the lighting Industry as 'Lumafix', this fixing offers rapid and toolless installation.



The two upper prongs of each bracket locate into parallel slots in the side of the luminaire, whilst the lower portion is held in place via a single screw. The double arm can then slide to the required position and be locked off by hand.

The arms are simply offered into the appropriate slot, slid into position and twisted to lock in place.

* see key on inside front cover