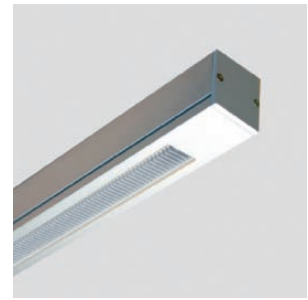




39%
21.5%



LG7

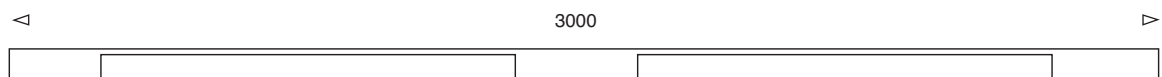
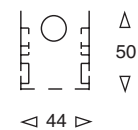
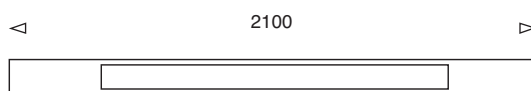


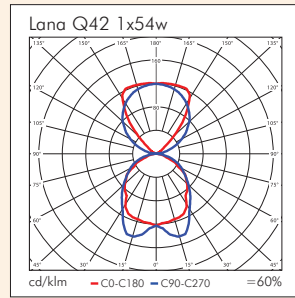
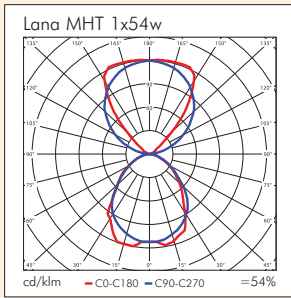
Lana

The slimline sister to the Vega, the Lana also utilises the MHT lens for downlight (optional Q45/Q42 Fisheye lenses or lamella louvre) and is open above for uplight. Based around an extruded aluminium construction with a width of only 44mm the Lana offers an unobtrusive suspended lighting solution. Supplied complete with 2-point adjustable stainless steel wire suspension kit.

- Extruded aluminium construction
- MHT lens
- Q45 & Q42 lens option
- Continuous run option – see Lana Konekt
- Direct, indirect and combination options

Lana





Product	Available Options	Power	Weight	Height	Width/Length	Suspension Centres
LNA-154	-Q45,-Q42,-LLVR,-DSI,-110,-DALI -SD,-EMI	1 x 54w	2.3kg	50	44 x 2100	Variable
LNA-254	-Q45,-Q42,-LLVR,-DSI,-110,-DALI -SD,-EMI	1 x 54w x2	3.1kg	50	44 x 3000	Variable

Options Code Suffix

Q45 Lens	-Q45
Q42 Lens	-Q42
Lamella Louvre	-LLVR
Dimming - DSI	-DSI
Dimming - 110	-110
Dimming - DALI	-DALI
Dimming - Switchdim	-SD
3 Hour Integral Emergency Facility	-EMI

Light Source	Code		Power	Lampholder	Colour Temp	Output
	ILCOS	LBS				
Linear Fluorescent T5	FDH	T16	54W	G5	865	4250 lm